

# Wood Moisture Meter *-New Arrival-*

## YW-212 / YW-212L

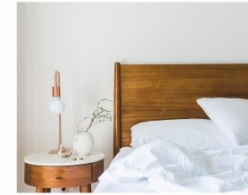
YW-212 series instrument is an integrated wood moisture detector, which can be used to detect the moisture content of wood fiber items such as wood, bamboo utensils, cotton, tobacco, paper and Chinese herbal medicines (The percentage of the weight of moisture in the wood to the weight of the wood after it is absolutely dry).

YW-212 series instruments measure the moisture content of the measured object through a probe, and the measuring range is 2~75%. When measuring, as long as you select the appropriate tree species and insert the two probes of the instrument into the wood to be tested along the vertical direction of the wood horizontal grain, the moisture content of the tested object can be accurately measured.

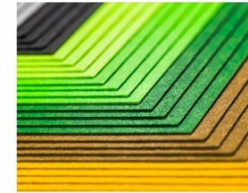
YW-212 supports multiple gear settings (TYPE 1~4), which can be used to detect the moisture content of different substances. At the same time, YW-212 also supports automatic temperature compensation, which can effectively reduce the impact of temperature drift on measurement accuracy.

The YW-212 series instrument includes two models, namely YW-212 and YW-212L. Among them, YW-212 adds the function of measuring environmental temperature and humidity on the basis of YW-212L, which can measure the temperature and humidity of the environment where the test object is located while detecting the water content. In addition, the YW-212 model instrument also adds a buzzer prompt function, which can be used by the user to determine whether the instrument has been pressed.

The YW-212 series of instruments are small and light, and can be carried around.



- Timber processing
- Building materials
- Home environment



- Paper processing
- Medicinal materials
- Laboratory



## FEATURES :

- High sensitivity probe
- 4 levels of tree species measurement
- Resolution 0.1%
- Environmental temperature and humidity measurement (YW-212)
- Automatic temperature compensation
- Data retention(HOLD)
- Maximum measurement mode
- Display with backlight
- Buzzer prompt (YW-212)
- Battery level display



Model	YW-212			YW-212L
Measuring Parameters	Moisture Content	Environment Temperature	Environment Humidity	Moisture Content
Measuring Range	2~75%	-10~50°C	0~100%RH (Non-condensing)	2~75%
Accuracy	±1.5%	±0.3°C	±3%RH(10~90%RH,25°C) ±4%RH(Others)	±1.5%
Resolution	0.1%	0.1°C	0.1%RH	0.1%
Response Time(t <sub>90</sub> )	1s	8s	8s	1s
Buzzer Notification	Yes			No
Automatic Shut-down	5 minutes			
Operation Temperature	-10~50°C			
Storage Temperature	-20~60°C(Without battery)			
Power Supply	3 pcs 1.5V AAA alkaline batteries/3 pcs 1.2V AAA rechargeable batteries			
Size of Probe	Φ2×10mm			
Size of Device	135×57×30mm			
Material	ABS			
Weight	About 93g(Without battery)			