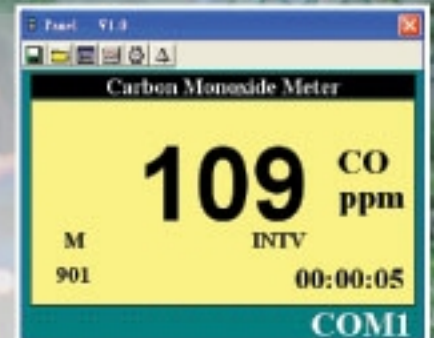
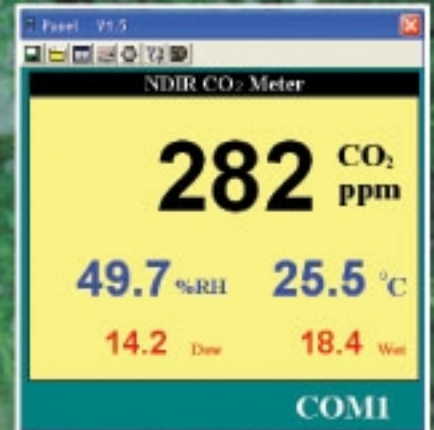


1370 NDIR CO₂ METER

1372 CO METER

- CO₂: 0 ~ 6,000 ppm range, Diffusion sampling mode (1370)
CO: 0 ~ 999 ppm range (1372 / 1372R)
- Humidity: 10%RH ~ 95%RH (1370)
- Data hold & Max. / Min. with Time stamp (1370)
- MAX Hold with Time stamp / STEL, TWA (1372 / 1372R)
- Alarm & Time setting
- Manual Data Memory and Read function (99 sets) (1370) / (999 sets) (1372 / 1372R)
- Auto data logging (20,000 sets) (1370) / (10,000 sets) (1372R)



TES

Reliable in Quality

1370 NDIR CO₂ METER

1372 CO METER

FEATURE

- CO₂: 0 ~ 6,000 ppm range, Diffusion sampling mode. (1370)
CO : 0 ~ 999 ppm range (1372 / 1372R)
- Three LCD Display for CO₂ , %RH Humidity and Air Temperature. (1370)
- Maintenance free dual wavelength NDIR infrared CO₂ sensor (non-dispersive infrared) (1370)
Stabilized electrochemical Gas-specific (CO) (1372 / 1372R)
- Data hold & Maximum / Minimum with Time stamp. (1370)
MAX Hold with Time stamp / STEL, TWA (1372 / 1372R)
- Alarm level setting.
- Auto power-off time setting.
- Automatic sensor zeroing upon start-up. (1372 / 1372R)
- Typical three year sensor life, one year calibration cycle. (1372 / 1372R)
- Backlight display function.

SPECIFICATIONS

	TES-1370	TES-1372 / 1372R
Measuring Range	CO ₂ : 0~ 6,000 ppm Temperature : -20°C ~ 60°C (-4°F ~ 140°F) Humidity : 10%RH ~ 95%RH	0~ 999 ppm
Resolution	CO ₂ : 1ppm 0.1°C / 0.1°F / 0.1%RH	1ppm
Accuracy	CO ₂ : ±3% of reading or ±50ppm, which is greater. Humidity : ±3%RH (at 25°C, 30 ~ 95% RH) ±5%RH (at 25°C, 10 ~ 30% RH) Temperature : ±0.5°C, ±0.9°C	±5% of reading or 2ppm, which is greater.
Sensor Type / Life	Stabilized electrochemical Gas-specific (CO) / 3 years. (1372 / 1372R)	
Auto Data Memory Capacity	Approx. 20000 sets	10000 sets (Only download by PC). (1372R)
Manual Data Memory Capacity	99 sets (Direct reading from LCD display)	999 sets (Direct reading from LCD display).
Operating Conditions	5°C ~ 50°C (41°F ~ 122°F) 10 ~ 90% R.H.	0°C ~ +50°C 15 ~ 90% R.H.
Power Source	Six (6) AAA-size alkaline (large current) batteries. Approx. 8 hours by using alkaline (large current) batteries (without backlight or Alarm function). For long time datalogging, please use AC adapter.	9V battery
Battery Life		Approx. 100 hours
Size	158(L)x72(W)x35(H)mm	170(L)x52(W)x38(H) mm
Weight	Approx. 255g with batteries	Approx. 180g with battery
Accessories	Instruction Manual, Battery, Software CD Rom, RS232 Cable & Carrying case, AC adapter. (1370) Instruction Manual, Battery, Carrying case. (1372) Instruction Manual, Battery, Software CD Rom, RS232 Cable & Carrying case. (1372R)	

TES**TES ELECTRICAL ELECTRONIC CORP.**

7F, No.31 Lane 513, Rui Guang Rd., Neihu Dist, Taipei, Taiwan

Tel : (02) 2799-3660 Fax : 886-2-2799-5099

E-mail : tes@ms9.hinet.net

<http://www.tes.com.tw>