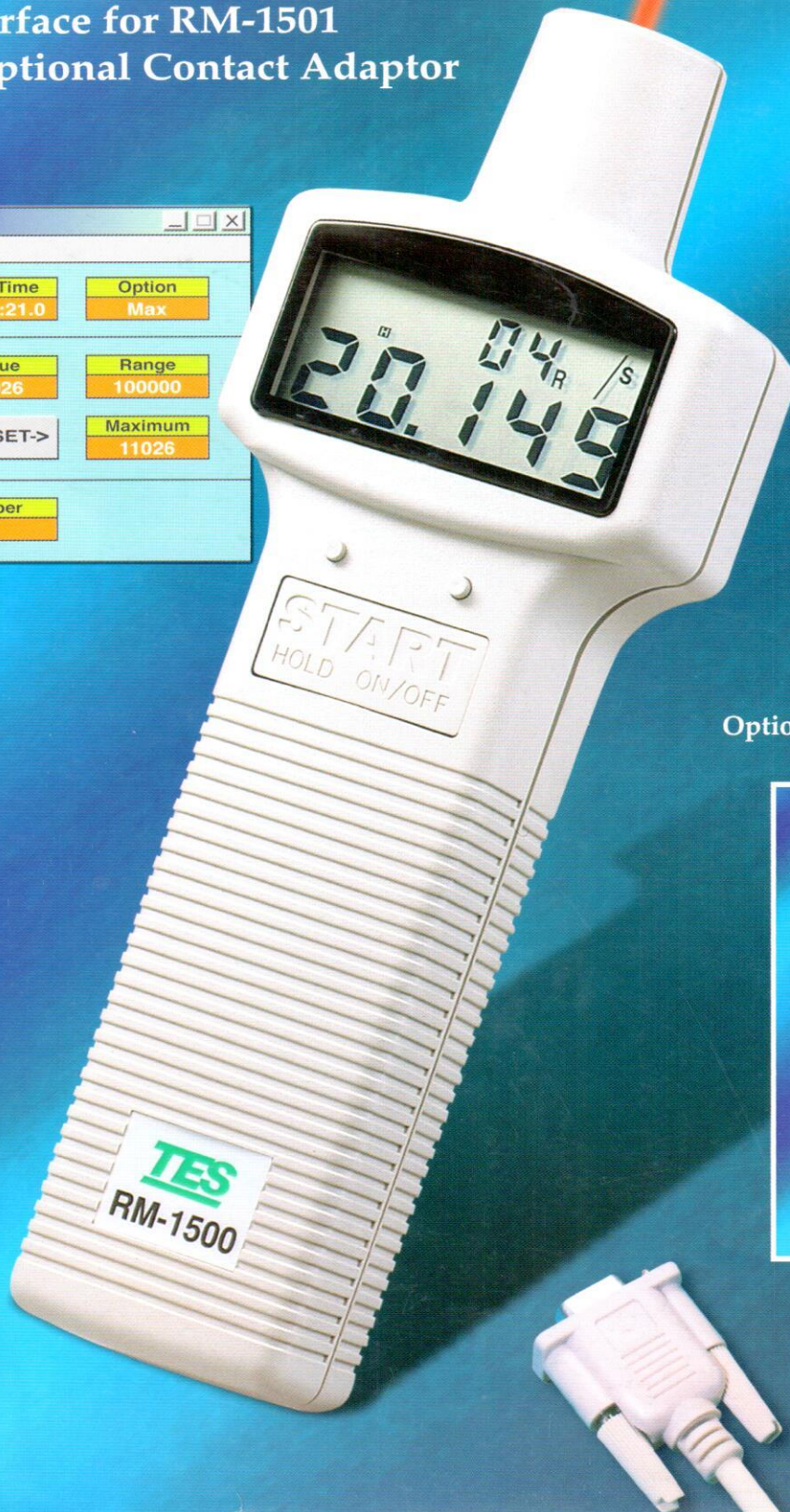
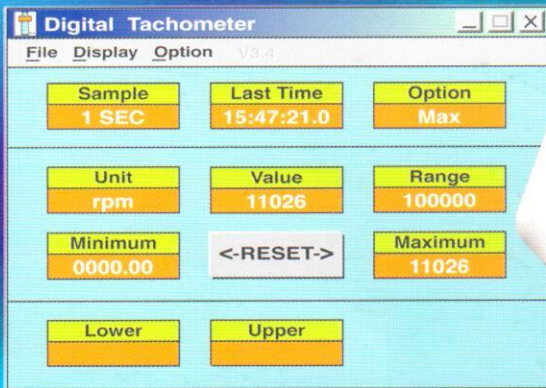


TES

Reliable in Quality

RM-1500/1501 DIGITAL TACHOMETER

- From 10.00 to 99,999 RPM
- Optical Measurement & Contact Measurement
- Event counter (0~99,999)
- RS-232 Interface for RM-1501
- RM-1502 Optional Contact Adaptor



Optional Contact Adaptor
RM-1502



CE

RM-1500/1501 DIGITAL TACHOMETER

FEATURES :

- 5 Digits LCD Display
- Light Reflex Measurement
- Range 10.00 to 99,999 RPM
- Measuring Distance 50 to 300mm
- Event counter with elapsed time
- RM-1502 optional Contact Adaptor
- Max/Min/Hold: True Average
- Auto Range RPM
- RS-232 Interface for Model RM-1501
- Contact RPM and circumferential velocity measurements in one simple adaptor(Rm-1502)

SPECIFICATIONS:

Speed (Optical):

	Range	Resolution	Accuracy
RPM	10.00 ~ 99999	0.01/0.1/1	0.04% ± 2 dgts
rps(Hz)	0.200 ~ 2000.0	0.001/0.01/0.1	0.04% ± 2 dgts

Speed (Contact)

	Range	Resolution	Accuracy
RPM / (/symbolizes "Contact")	20.00 - 29999	0.01/0.1/1	0.04% ± 2 dgts
m/min	2.000 - 2999.9	0.001/0.01/0.1	0.04% ± 2 dgts
ft/min	6.00 - 10000	0.01/0.1/1	0.04% ± 2 dgts
yard/min	2.00 - 3000	0.01/0.1/1	0.04% ± 2 dgts

Event Counter:

Range	Max. Input Frequency
0 - 99999	10KHz. with 5% duty cycle

General Specifications:

External TTL Input	High > 4.5V (RM1501)
Display	5 digits 99999 counts
Sampling Rate	0.7 second (> 60 rpm) > 1 second (10 to 60 rpm)
Measuring Distance	50 to 300 mm
Time Base	4.0 MHz Quartz Crystal
Range Selection	Automatic
Battery	Four 1.5V batteries (AA, UM-3)
Power Consumption	1.5mA (Idle) 5mA (1000.0 - 99999 rpm) 25mA (10.00 - 999.99 rpm) 25mA (Max, Min or Ave Enabled) 25mA (Event Counter)
Auto-Power-Off	30 minutes.
Operating Temp.	0 to 50°C (32 to 122°F)
Size	72 mm x 63 mm x 36 mm (6.8" x 2.5" x 1.5")
Weight	190 g(6.7 oz.) (including battery)
Accessories	Carrying case x 1, Reflective tape x 1, Instruction Manual x 1 (Software & RS-232 interface for RM-1501)
Optional accessories	RM-1502 Contact Adaptor



TES ELECTRICAL ELECTRONIC CORP.

7F, No.31 Lane 513, Rui Guang Rd., Neihu Dist, Taipei, Taiwan, R.O.C.

Tel : (02) 2799-3660 Fax : 886-2-2799-5099

E-mail : tes@ms9.hinet.net <http://www.tes.com.tw>