



# Thermal Imaging Camera Instruction Manual



HT-19



Dongguan Xintai Instrument Co.,Ltd.

- 📍 Add: Building F, No. 22 Yuhua Street, Hongye Industrial Zone, Tangxia Town, Dongguan City, Guangdong Province  
Postcode:523710
- ☎ Tel:+86-769-82612006
- 📠 Fax:+86-769-82612005
- 🌐 Website:[www.hytechcn.com.cn](http://www.hytechcn.com.cn) [www.xintest.com.cn](http://www.xintest.com.cn)
- ✉ Email:[kevin@xintest.com.cn](mailto:kevin@xintest.com.cn)

# Contents

1. Overview	1
2. Considerations and Safety Maintenance	2
3. Read images	2
4. Performance index	3
5. Product Description	4
5.1. Instruction to structure	4
5.2. Key Description	7
5.3. Key Description	8
6. Initial Operation	9
7. "Image registration" menu introduction	10
8. Introduction to "image" sub-menu	11
8.1. View image	11
8.2. Delete images	11
9. Introduction to "color palette" sub-menu	12
9.1 Color Palette Description	12
9.2 Application of color palette	13
10. Introduction to "emissivity" sub-menu	13
10.1 Emissivity Description	13
10.2. Emissivity setting	14
10.3 The Emissivity Value of Common Materials	15
11. Introduction to "Setting" Sub-menu	16
11.1 Time Setting	17
11.2. Enable/disable of the highest and lowest temperature cursor	18

# 1. Overview

This product is an infrared camera that integrates surface temperature measurement and real-time thermal image. The traditional inferred thermometer needs to measure every component one by one while it is not necessary for infrared imaging camera, thus saving time. The potential problems may be displayed on color display screen clearly. Moreover, the central point measurement cursor is used to locate quickly and accurately to measure the temperature of the target object.

In order to increase the differentiation, the product is provided with a visible light camera. The thermal images and visible images are stored in the device and can be read through USB or stored in a computer to generate a report or for print.

The product can be used in fields of medical treatment, fire fighting, archaeology, traffic, agriculture, geology, energy, smelting, electronic manufacture, etc and is the ideal selection for electrician and maintenance personnel and technicians and can be used to find the problem area quickly.

The following major functions increase the product's accuracy and usability:

- The radiation coefficient may be adjusted to increase the measurement accuracy of objects with half reflection surface.
- The highest temperature and lowest temperature cursor may guide the users to the areas with highest and lowest temperature of the thermal images.
- The selectable color palette.

## 2. Considerations and Safety Maintenance

Please read the instruction for use carefully in order to ensure correct measurement result:

- Don't use the device in explosive, flammable or corrosive environment.
- The product belongs to precision electronic and sensitive optical devices. Don't impact and drop it to avoid damage.
- Don't dismantle and remodel the products.
- When the product works, there is light sound of clicking every several seconds. This is normal phenomenon that the lens captures images.
- Please use damp cloth or weak soap to clean the enclosure of the device. Don't use abrasives, isopropanol or solvent to clean. Special optical lens cleaner is used to clean the screen.

## 3. Read images

Use USB cable to connect to your computer, then can read images or save them to your computer.

Through verify, the supported systems have: winxp, win7, win 8, win10, Apple. It is recommended to use the supplied USB cable or use a better USB cable.

Note: When connecting to the computer, select "Safe Eject Device" and then unplug the cable.

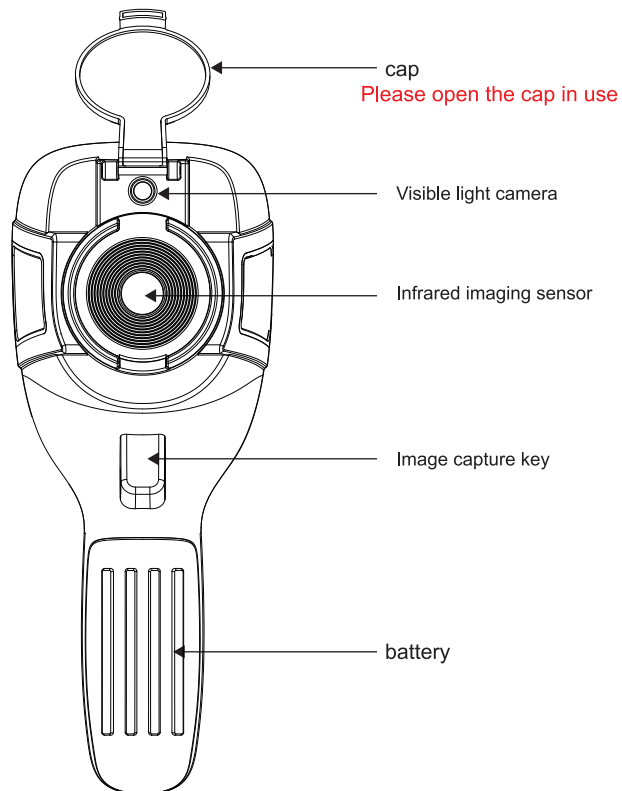
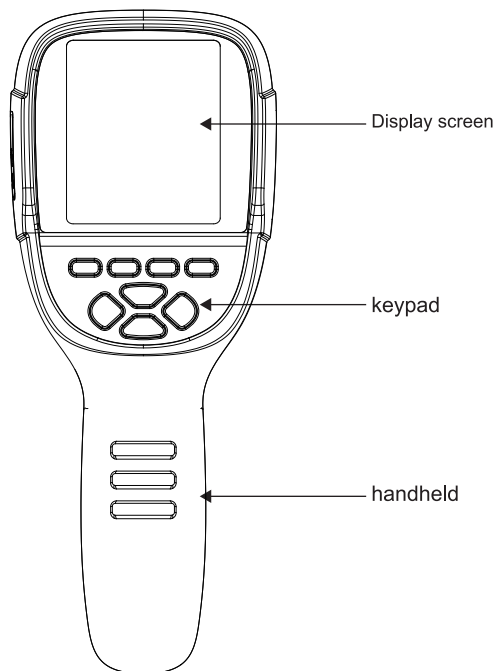
Avoid problems such as file storage errors. If there is a problem such as not being able to store, find the hard disk in your computer and fix it.

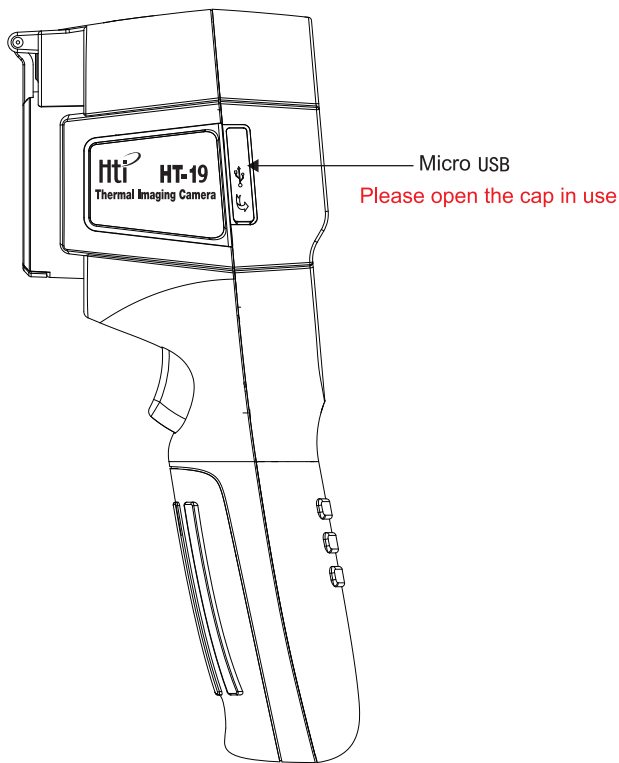
## 4. Performance index

Display screen	3.2 " full angle TFT display screen
Infrared image resolution	320x240
visible image resolution	300,000 pixel
LCD resolution	320×240
Field angle/focus length	26°×34°/2.0m
Thermal sensitivity	0.07 C
Temperature measurement range	-20 C to 300 C (-4°F to 572°F)
Measurement accuracy	±2% / ±2 C
Emissivity	Adjustable from 0.01 to 1.00
Frame rate of thermal images	9Hz
Wavelength coverage	8-14um
Focus mode	Fixed
Color palette	Rainbow, iron oxide red, cold color, black & white, white & black
View option	The integration of thermal image with 25% step length and visible image.
Storage medium	Built-in 3G (above 20 thousand image stored)
File format	JPG
USB	Micro USB 2.0
Power supply	Built-in chargeable 18650 battery
working time	2-3 hours
Automatic power-off time	Selectable: 5 minutes/20 minutes/ not power off automatically
Open response time	0 minutes
Product size(length × width × height)	90mm×105mm×223mm
Product weight	389g
Work temperature	0 C to 45 C
Storage temperature	-20 C to 60 C
Relative humidity	< 85%RH

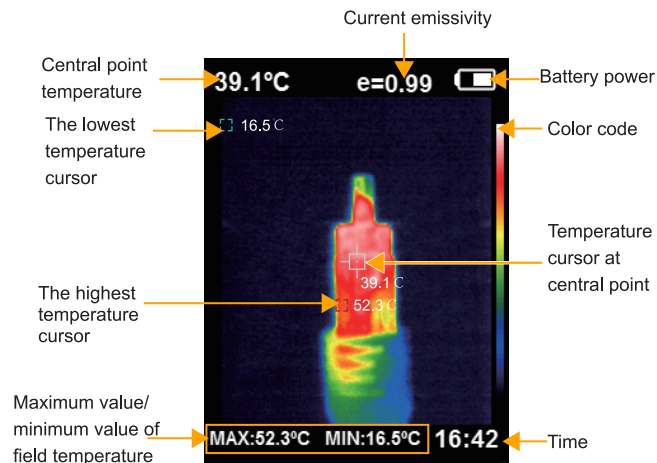
## 5. Product Description

### 5.1. Instruction to structure





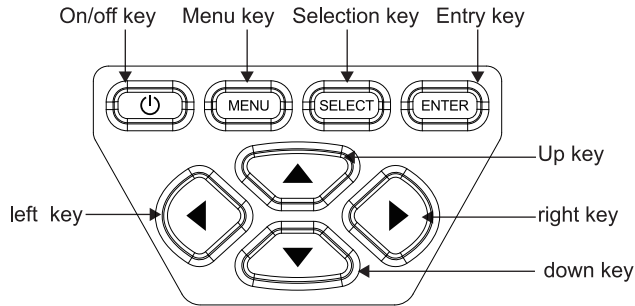
## 5.2. Key Description



1. Color code: used to mark the color corresponding to the relative temperature from low to high in the field of version.
2. The central point temperature cursor: used to indicate the central position in the screen area. The cursor color displays white. The temperature value is displayed at top left corner of the screen.
3. The highest temperature cursor: used to indicate the highest temperature position in the screen area. It will move with the movement of the highest temperature. The cursor displays red. The temperature value is displayed at bottom left corner of the screen.


4. The lowest temperature cursor: used to indicate the lowest temperature position in the screen area. It will move with the movement of the lowest temperature. The cursor displays red. The temperature value is displayed at the central position of the screen.



### 5.3. Key Description



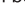

## 6. Initial Operation

6.1 Charging: the product is provided with built-in 18650 lithium battery. When the battery power is not sufficient, please charge it through Micro USB interface in time.

6.2 On/off key: hold down “  ” key to power on /off.

6.3 Switching between infrared thermal image and visible image: press “  ” or “  ” key to switch the degree of fusion between inferred thermal images and visible images (the degree of fusion is 0%, 25%, 50%, 75% and 100%).

6.4 Image capture: press the image capture key. When the capture is successful, the screen will display “store photo?” prompt. If “yes” is selected, please press “MENU” key to determine to save the image. If “no” is selected, press “SELECT” key to determine not to save the image.

6.5 The function to hide highest/lowest temperature column at the screen bottom: under the operation after normal start up, press “  ” key and the screen bottom will display highest/lowest temperature column. Press “  ” can also hide it.

6.6 Image output: The saved images through capture may be checked and output by connecting with a computer through Micro USB.

## 7. "Image registration" menu introduction



As shown in the figure, press the "MENU" button to enter the main menu, and select "Image registration" in the main menu.

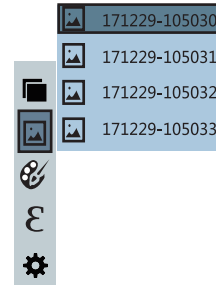
Press the "SELECT" button to enter the image overlap adjustment mode.

Press the navigation keys (up, down, left and right buttons) to perform the visible image shift operation.

Press the "ENTER" button to exit the image blending mode (Note: If there is no operation for more than 6 seconds, the image blending mode will be automatically exited).

## 8. Introduction to "image" sub-menu

### 8.1. View image



As shown in the figure, press "MENU" key to select "image" option in the main menu. Then press "▷" key to enter image list. Press "△" or "▽" key in navigation to select the image. Then press "SELECT" key to view image. When viewing the images, press "◀" key to view the previous image. Press "▷" to view the next image. Press "ENTER" key to return. Press "MENU" key to exit from the menu.

### 8.2. Delete images

When viewing the images, the screen will show the prompt of "Delete photo? " by pressing "△" key. If "yes" is selected at the moment, press "MENU" key to determine to delete the image. If "no" is selected, press "SELECT" key to determine not to delete the image.

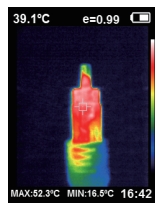
## 9. Introduction to “color palette” sub-menu

### 9.1 Color Palette Description

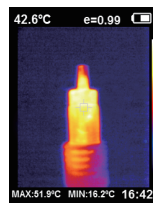
The menu of color palette can change the false color of infrared thermal image. The product provides five types of color palette: rainbow, iron oxide red, cold color, white heat and black heat.

Suitable selection of color palette displays the details of the target objective better. Rainbow, iron oxide red and cold color palettes focus on display of color. Such color palettes are very suitable for high heat contrast and are used to improve the color contrast between high temperature and low temperature. But the black & white and white & black color palettes provide even linear color.

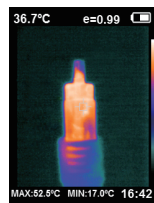
The following is the image of the same object with selection of different color palettes.



Rainbow



Iron oxide red



Cold color

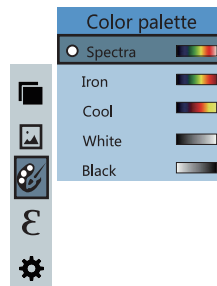


White heat



Black heat

## 9.2 Application of color palette



As shown in the figure, press “MENU” key to enter the main menu and select “color palette” option and press “>” key to enter the color palette list. Press “△” and “▽” keys in navigation to select the color palette. Then press “SELECT” key to select the color palette. Press “<” to return. Press “MENU” key to exit from the menu.

## 10. Introduction to “emissivity” sub-menu

### 10.1 Emissivity Description

The emissivity of the product can be adjusted from 0.01 to 1.00 with the default value of 0.95. Many common objects and materials (such as timber, water, skin and textile fabric) can reflect the heat energy effectively. So it is easy to obtain relatively correct measurement value. The emissivity is usually set as 0.95 when the coarse objects that are easy to give out energy. For semi-matte objects that give out less energy, the emissivity is usually about 0.85 and the emissivity of semi-gloss objects is 0.6. The shiny objects are divided into materials with low radiation coefficient. The emissivity is usually set as 0.3 at the time of measurement. Correct setting of the value of emissivity is very important for you to carry out the most correct temperature measurement. The surface emissivity will produce giant impact on surface temperature measured by the product. Understanding the surface emissivity will enable you to obtain correct temperature measurement result.



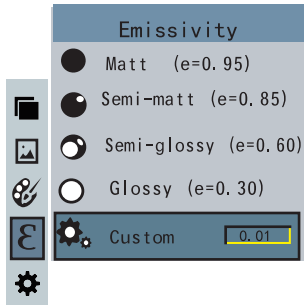
## 10.2. Emissivity setting

The product is provided with four types of object measurement modes:

- Coarse object (0.95)
- Semi-matte object (0.85)
- Semi-shiny object (0.60)
- Shiny object (0.30)

According to the characteristics of the measured objects, users may set the emissivity value through the “self-define” option (please refer to the table of “emissivity of common materials”).

The operating step is as the following:



As shown in the figure, press “MENU” key to enter the main menu and select “emissivity” option and press “ $\triangleright$ ” key to enter the emissivity list. Press “ $\triangle$ ” and “ $\nabla$ ” keys in navigation key to select the emissivity. Then press “SELECT” key to determine selection of the emissivity. Press “ $\triangleleft$ ” key again to return.








If to select “self-defined” emissivity, please press “SELECT” key to enter the edit state. Press “ $\triangleleft$ ” and “ $\triangleright$ ” keys to select the number to be changed. After the change is completed, press “ENTER” key to enter. Then press “ $\triangle$ ” and “ $\nabla$ ” keys to change the value. Press “MENU” key to exit from the menu.

## 10.3 The Emissivity Value of Common Materials

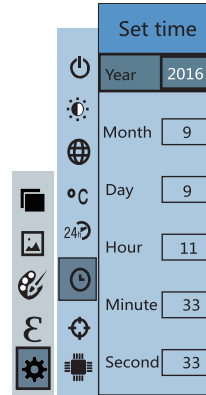
Substance	Thermal radiation	Substance	Thermal radiation
Bitumen	0.90~0.98	Black cloth	0.98
Concrete	0.94	Human skin	0.98
Cement	0.96	Foam	0.75~0.80
Sand	0.90	Charcoal dust	0.96
Earth	0.92~0.96	Paint	0.80~0.95
Water	0.92~0.96	Matte paint	0.97
Ice	0.96~0.98	Black rubber	0.94
Snow	0.83	Plastic	0.85~0.95
Glass	0.90~0.95	Timber	0.90
Ceramics	0.90~0.94	Paper	0.70~0.94
Marble	0.94	Chromium hemitrioxide	0.81
Gypsum	0.80~0.90	Copper oxide	0.78
Mortar	0.89~0.91	Ferric oxide	0.78~0.82
Brick	0.93~0.96	Textile	0.90

# 11. Introduction to "Setting" Sub-menu

Press "MENU" key to select the "setting" option in the main menu.  
 Press " > " key again to enter the "setting" sub-menu.

Settings		
 <b>Auto shutdown</b>	▶ Auto shutdown	NO 5min 20min
 <b>Intensity</b>	▶ Intensity	Low Medium High
 <b>Language</b>	▶ Language	English Chinese Italian German
 <b>Unit</b>	▶ Unit	Celsius Fahrenheit
 <b>Time format</b>	▶ Time Format	24 hour AM/PM
 <b>Set time</b>	▶ Set time	Year 2017 Month 12 Day 28 Hour 15 Minute 15 Second 15
 <b>Spot</b>	▶ Spot	Off On

## 11.1 Time Setting



Press " △ " / " / " ▽ " to select year/ month/day/hour/minute.



After selecting, press "SELECT" key to enter the edit state.



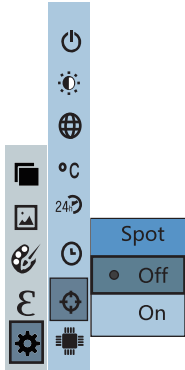
Press " < " and " > " keys to select the figure to be changed.  
 Press " △ " / " / " ▽ " key to change the value. After completing the change, press "ENTER" to enter.



After the time setting is completed, press " < " key to return. Press "MENU" exit from the menu.

## 11.2. Enable/disable of the highest and lowest temperature cursor

As shown in the figure, after entering the "setting" sub-menu, select the cursor point (spot). Press "▷" key in the navigation key to enter cursor point (spot) setting.



Press "△"/"▽" key to select "enable" or "disable" the option



Then press "SELECT" key to determine selection



After the setting is completed, press "◀" key to return. Press "MENU" key to exit from the menu