

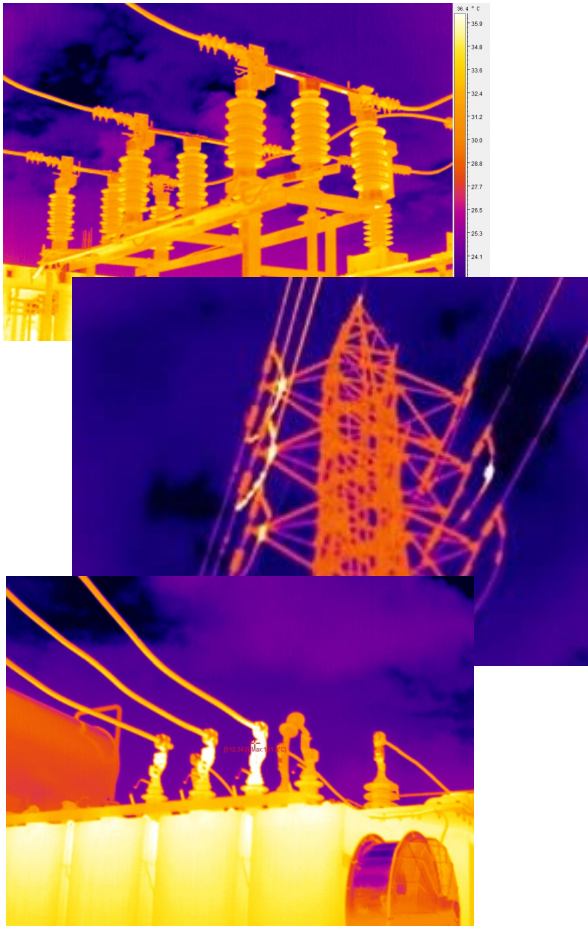
Hotfind-S Advance Level



The Hotfind-S is an advance level camera that can be used in universal industrial applications. It uses new imaging processing technology to reduce interference combined with the outstanding performance of the latest generation 384x288 detector, the Hotfind-S produces sharper thermal images. The high speed processing engine with up to 50Hz dynamic real-time graphical output, produces a smooth, no delay image

Key Features

- User Friendly Platform
- Ergonomic Design for left or right hand operation
- Measurement Tools included such as auto/hot spots, line profile and area boxes
- Dual control via keypad or touch screen
- Battery Life of 4 hours
- Additional lenses available upon request



Hotfind-S Specifications

Image Performance	
Resolution	384x288
Thermal Sensitivity (N.E.T.D)	0.05°C@30°C
Detector Type	UFPA
Spectral Range	7.5 - 14 μm
Focus Mechanism	Manual
Measurement	
Temperature Range	-20°C + 600°C (Up to 1500°C, Optional)
Accuracy	±2°C + 2% of reading
Measurement Tools	9 movable spots, auto hot/cold spot, 1 line profile, 2 areas boxes, isotherm
Temperature Alarms	Yes detects abnormal temperatures
Environmental	
Operating	-20°C ~+ 50°C
Storage	-40°C ~ + 70°C
Encapsulation	IP54
Image Presentation	
Image Mode	IR/Digital/Duo-Vision Plus
Video Output	NTSC (60Hz)/PAL (50Hz)
Physical Characteristics (Camera Body)	
Weight	Less than 800g
Dimensions	215 mm×80mm×219mm
Interfaces	
Keypad	Yes
Memory	Removable SD Card
Battery	Interchangeable Battery

Please be aware specifications can vary from time to time